

TECHNICAL NOTE # 220

Re: Erasing Processor Module File Block

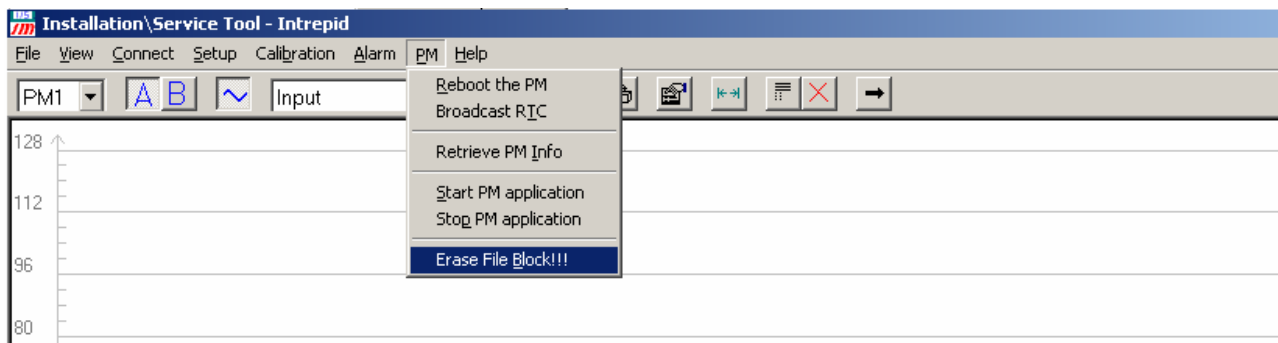
Date: September 27, 2005

The practice of erasing the file block within the Processor Module (PM) should be performed before installing a PM into a new system or when upgrading application software. Erasing the file block may also be used as a corrective measure in the case of data corruption within a PM. *Performing this function will remove all previous data from the flash memory of the PM, including the address, calibration and all map information, as well as reset the processor registers.*

Obvious symptoms of PM corruption are loss of communications or toggling PM LEDs between the Left Alarm and Right Alarm. If communications failure occurs between the PM and computer, always verify the computer com port configuration is correct (i.e. com port number, baud rate and ensure the modem active box is NOT selected) before erasing the PM.

Note: This procedure is best performed when connected directly to the corrupted PM's adapter port using the model 232A Adapter.

At the engineering screen, select the PM address of the PM to be erased. Make the menu selection at the engineering screen (as shown below) or type the following sequence of keystrokes; alt, p, b, y. The keystrokes should perform the following series events, alt = activates the pull down menus, p = activates the specific pull down for "PM", b = selects "erase file Block" from the menu, y = gives confirmation to execute the command.



In the event of data corruption it is necessary to perform the above keystrokes during start-up of the PM's application software. To accomplish this, remove power from the PM board by unplugging one of the PCC cables located at the front of the PM board. Upon reapplication of power the PM will begin boot-up. During boot-up repeat the keystrokes as many times as possible.

Usually one attempt will be satisfactory to erase the PM however it is sometimes necessary to perform this function more than once. After successful completion, readdress the PM and down load the Site Data File to the PM.