

Re: Remote Mount on Windows 7 or 8™ for GCM II-HD

Date: June 11, 2012

INTRODUCTION

This technical note will explain how to setup and establish a “Remote Mount” connection from GCM II-HD to a network computer or other computer using Windows 7 or 8.

A network cable will be required to connect from the RJ45 network port on the GCM II-HD. If the network port on the PC is not 1gig or higher a crossover cable will be required.

REMOTE PC CONFIGURATION

For the “Remote Mount” to operate, a folder needs to be created on the PC where the information will be sent and retrieved. This folder can be on the desktop or any location on the hard drive that is easily accessible. The following information shows the folder created on the desktop.

1. On the PC where the shared folder will be located, right click the screen to open the dialog boxes as shown in Figure 1. Select “New” then “Folder” to create a folder on the desktop.

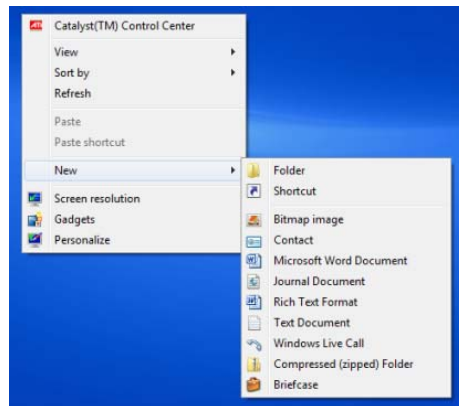


Figure 1

2. Provide the folder a name such as “Remote” or any name that makes logical sense for this site. Right click the folder and select “Properties” as shown in Figure 2.

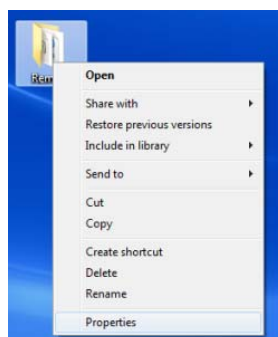


Figure 2

3. The Remote Properties screen will open at the “General” tab and show the folder name. Select the “Sharing” tab and “Share” button as shown in Figure 3 to open the “File Sharing” screen as shown in Figure 4.

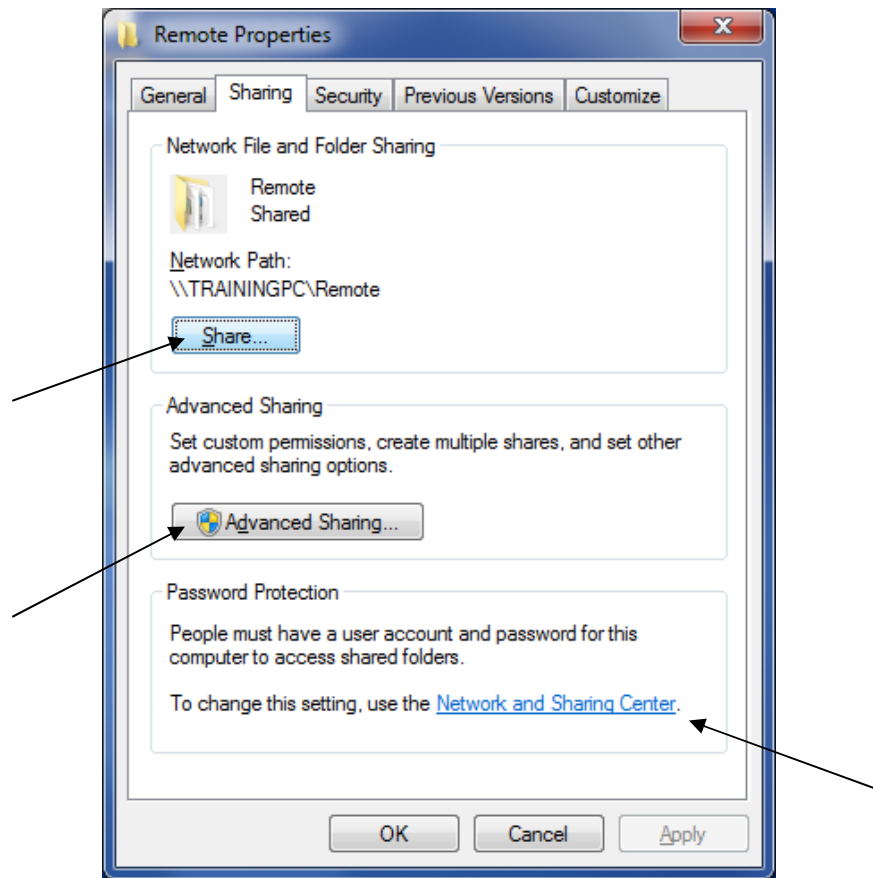


Figure 3

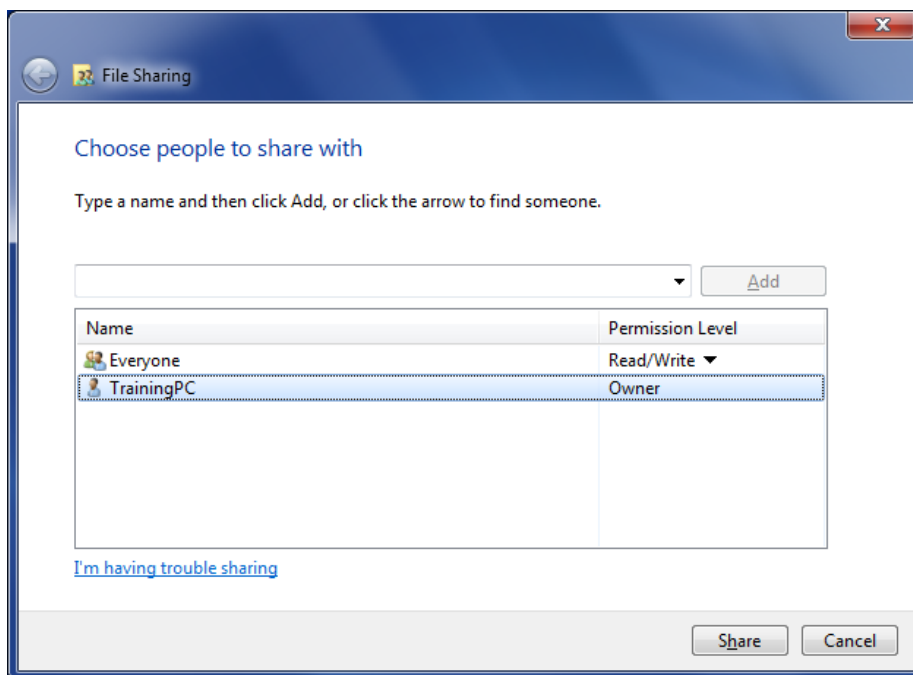


Figure 4

Select the PC's name then select the "Share" button. Once the "Share" button has been selected the "your folder is shared" screen will open as shown in Figure 5. Select "Done" to complete.

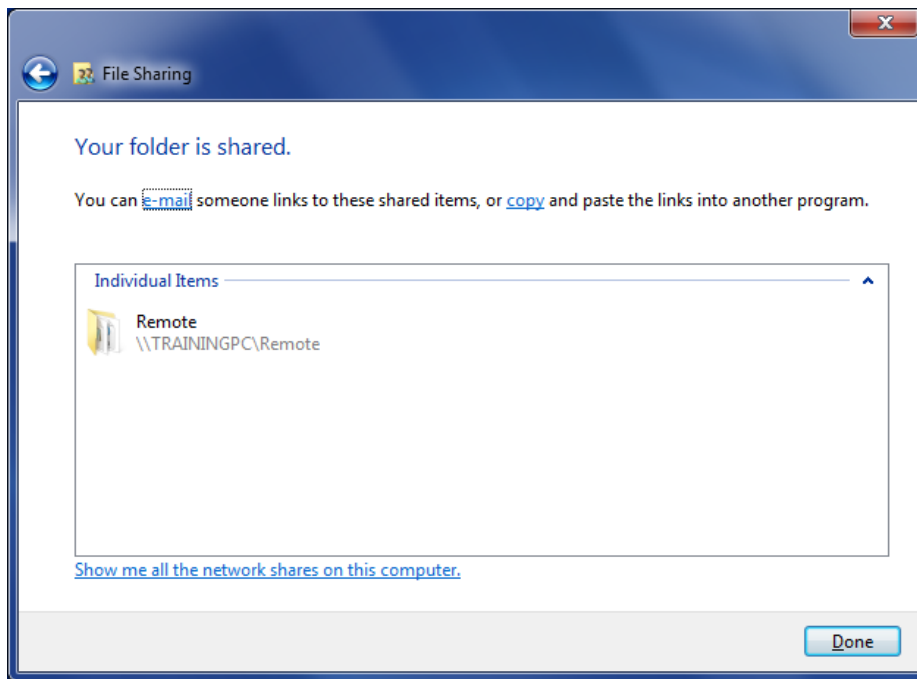


Figure 5

4. Select the "Advanced Sharing" button shown in Figure 3 to open the "Advanced Sharing" screen as shown in Figure 6. Select the "Share this folder" box to activate sharing of this folder. Make sure the "Share name" displays the correct folder that was created. Select "Apply" then "OK" to enable sharing.

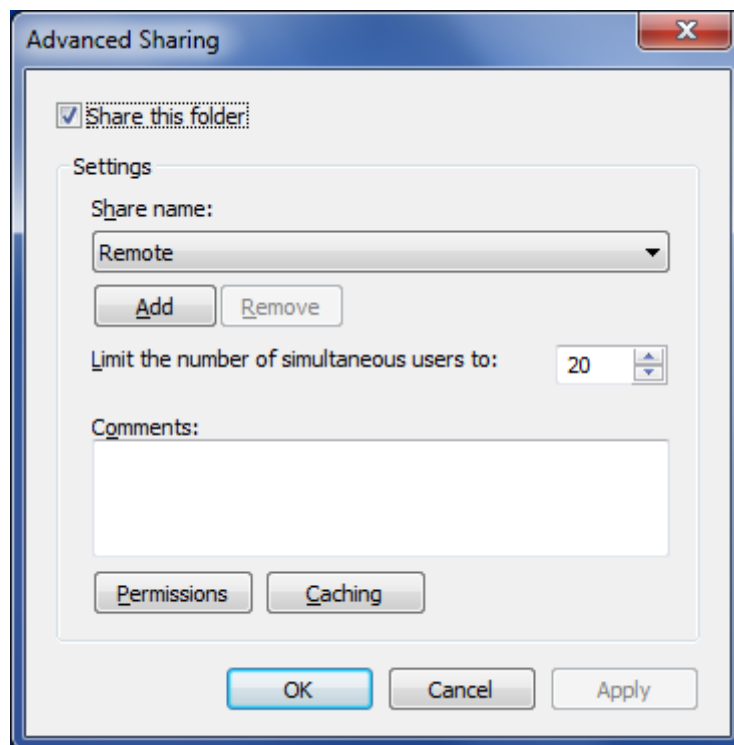


Figure 6

5. To allow file transfer in both directions select the “Permissions” button as shown in Figure 6 to open the “Share Permissions” tab as shown in Figure 7. Select “Full Control” to allow writing to the folder and retrieving from the folder. Select “Apply” then “OK” to set permissions.

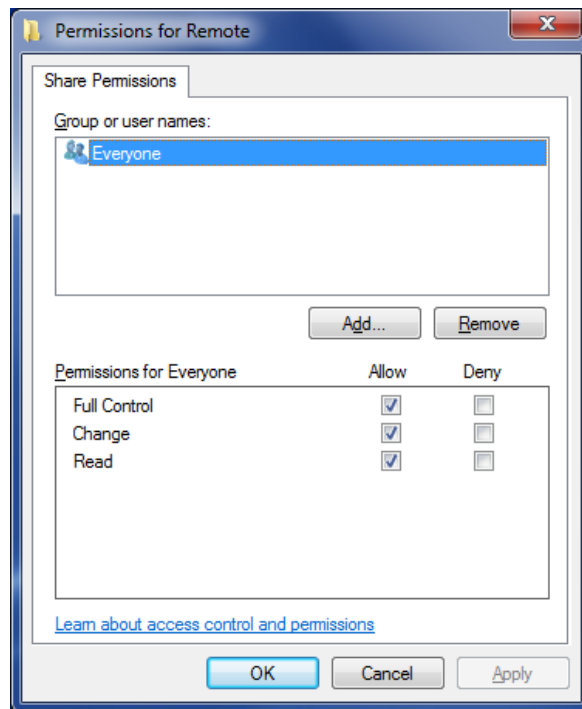


Figure 7

6. Select “Network and Sharing Center” as shown in Figure 3 to open the “Password Protection” section to open the “Change sharing options for different network profiles” screen as shown in Figure 8. Ensure the “Turn on network discovery” radial button is “On”. The file, printer and public folder sharing can also be turned on if needed. If changes are made, select the “Save Changes” button.

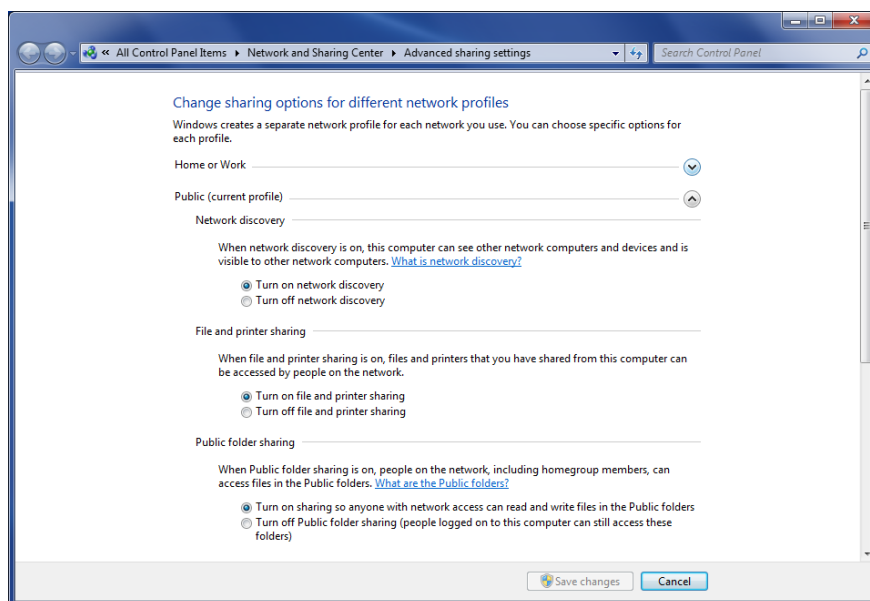


Figure 8

7. Select the “Security” tab as shown in Figure 3 and check the group or user names to ensure that the listed entries have full control.
8. Find the IP address of the Windows™ PC where the shared folder resides by using the “Start” button. Type **cmd** in the “Search programs and files” field to find the Windows Command Processor. Select the **cmd** program to open the C:\WINDOWS\system32\cmd.exe dialog box. Type the command **ipconfig** and press enter to find the IP address of the PC. Alternatively select the “Network and Sharing Center” from the control panel then the Local Area Connection to open the “Local Area Connection Status” dialog box and select the “Details” button to find the IP address.

GCM II-HD SETUP

Once steps 1-5 have been completed the file is now ready for use. Items such as the map, sounds, alarm files, etc. can be transferred between the GCM II-HD and this computer once the GCM II-HD has been properly configured.

1. Open the “GCM II Properties” menu on the GCM II-HD and select the “Mount” tab. Select the “Remote” tab to open the remote mount screen as shown in Figure 9.

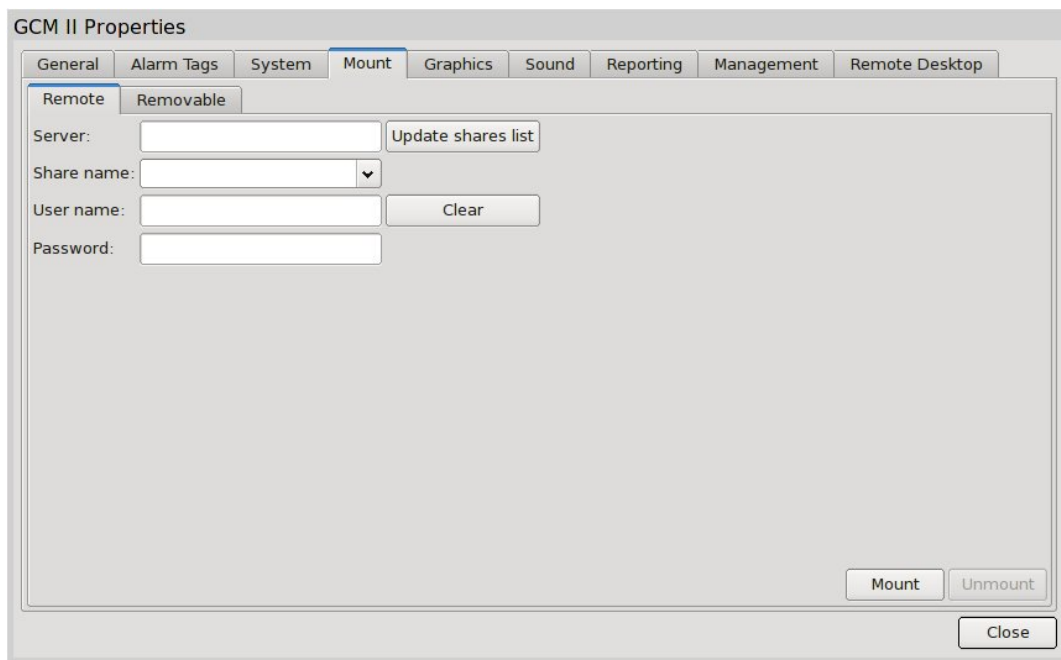


Figure 9

2. In the “Remote” tab enter the IP address of the PC where the shared folder resides in the “Server” field.
3. Enter the name of the remote folder in the “Share name” field.
4. Enter the “Name” of the PC in the “User name” field.
5. Enter the “Password” of the PC (if one has been assigned) in the “Password” field.
6. Select “Mount” to make the “Remote Mount” active.
7. When transferring data from the Path to Upload or Path to Download, the file will be listed under “/media/net”.

Refer to the GCM II-HD manual for additional information on the GCM II-HD.