

Company Name Synectic Systems Group Ltd

Contact Name David Aindow

Job Title Product & Technology Director

Email david.aindow@synx.com

Telephone +44 (0) 114 255 2509

Web www.synx.com

Synectic Systems Group Ltd company profile

Synectic Systems Group Ltd (Synectics) is a leading developer and manufacturer of innovative and integrated security systems with 25 years' experience providing surveillance systems throughout Europe, North America and the Middle East.

Delivering protection for national, civil and commercial critical infrastructure, Synectics is the system of choice for the world's most demanding security environments.

Specialist divisions at Synectics are equipped with extensive sector expertise in areas such as Banking, Transportation, Critical National Infrastructure, Defence, Oil & Gas and Gaming

Synectics Southwest Microwave Inc. Interface

Synectics Synergy security management software integrates with INTREPID MicroPoint, MicroTrack and New Generation INTREPID products from Southwest Microwave Inc. This integration enables perimeter intrusion detection systems (PIDS) alarm triggers to be received in to the Synergy Command and control user interface.

Synergy combines these triggers with other security related and system events, such as an access control breach, in order to create true situational awareness.

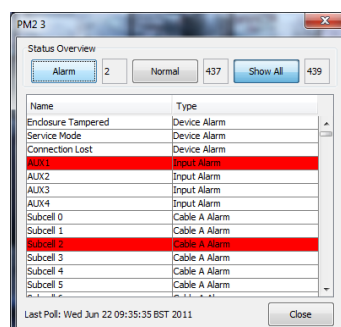
An interface between the Synergy and SMI systems is via serial connectivity, which is normally achieved via IP to Serial media converters to allow a distributed IP architecture to be delivered.

Synergy is able to receive, analyse and report the following types of SMI events;

- Device Alarms – Report tamper, fault, service and connection alarm conditions.
- Subcell Alarms – Report when one of a group of subcells (fence or buried cable) goes into alarm.
- Input Alarms – Report when an input goes into the alarm state.

In all cases the icon representing the alarm will change to provide at a glance operational status.

Furthermore, detailed status of all alarm conditions associated with a device can be accessed through a popup dialog for the device alarm.



In situations where operators need to control SMI based relay outputs, they can do this readily from within the Synergy UI.



Installation of the Synergy SMI interface is achieved via the purchase of an add-on Synergy module. Configuration is performed either manually, or via a CSV import of the SMI configuration data.